

Aims to invest in the

# BEST OF INDIA's



**Proven Leaders**  
(Large Caps)



**Emerging Giants**  
(Mid Caps)



**Rising Champions**  
(Small Caps)

Presenting

# Edelweiss Multi Cap Fund

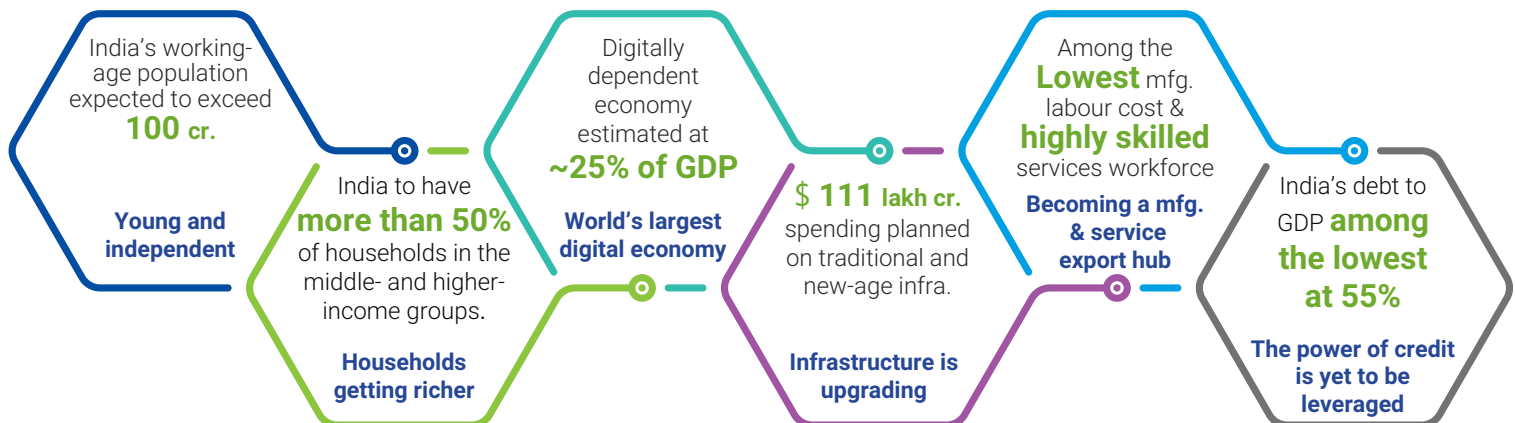
(An open ended equity scheme investing in a portfolio of largecap, midcap and smallcap stocks)

*‘शरवगुण शरपान्ना’*



## India's decade

India is entering into one of its best decades of prosperity. It is scoring high in every possible area that are creating multiple opportunities





## Multi cap category provides the structural edge to invest across ideas

Market Cap	Multi Cap strategy (benchmark)	Multi Cap Fund (category)	Flexicap Fund (category)	Large & Midcap Fund (category)	Nifty 500
Large Cap	50%	39%	60%	46%	74%
Mid Cap	25%	26%	18%	37%	17%
Small Cap	25%	28%	14%	11%	9%



## Best of India's stories are spread across marketcap

Industry	Large cap universe	Mid cap universe	Small cap universe
Banks	HDFC, ICICI, SBI, Kotak, Axis	Union, Indian Overseas, Yes, AU, IDFC First	
IT Software	TechM, TCS, LTIM, Wipro, HCL Tech, Infosys		
Realty		Macrotech, Godrej Properties, Oberoi Realty	
Industrial Products		Polycab, Cummins, Astral, Bharat Forge	KEI Ind., Ratnamani Metals, Elgi Equipments
Auto Components		Schaeffler, Balkrishna, MRF	Exide, CIE Automotive, Amara Raja Batteries
Capital Markets		HDFC AMC	ICICI Securities, Nippon AMC, Indian Energy Exchange
Healthcare Services		Max, Syngene, Fortis	Dr.Lal Pathlabs, Narayana Hrudayalaya, Aster, DM Healthcare
Consumer Durables		Voltas, Metro, Kansai Nerolac	Blue Star, Bajaj Electricals, Century Plyboards

**No. of companies with market cap >INR 20,000 cr  
27 in 2008 to 266 in 2023**

Data source for market cap split: ACE MF. Data as on 31<sup>st</sup> October 2023. Category average market cap split has been provided above. Numbers have been rounded off for better representation, Portfolio Allocation is based on the prevailing market conditions and is subject to changes depending on the fund manager's view of the equity markets. For detailed asset allocation, please refer to the Scheme Information Document (SID).  
Source for market capitalization: Bloomberg, Edelweiss internal research; 2023 data is as on September 2023. The mentioned Industry and stocks are only illustrative and as per AMFI Market Capitalization classification for six months ending June 2023 and it may or may not form part of our portfolio. The analysis of stocks/ sectors/ issuers mentioned should not be construed as a research report/ recommendation and the fund may or may not have exposure to these stocks/sectors/issuers currently or in the future.



## Portfolio construction strategy

### Large Cap

Investment in **Proven Leaders** expected to continue to

- Deliver consistent high growth
- Have strong balance sheets
- Run by good managements

35-45% of Portfolio

### Mid Cap

Selection of **Emerging Giants** essentially characterised by

- Strong businesses that offer good earnings and growth opportunities
- Quality businesses that have profitable products and services
  - Good management
  - Relatively higher liquidity on the stock exchanges

25-35% of Portfolio

### Small Cap

Identifying **Rising Champions** that

- Aim to deliver exponential business and earnings growth
- Are likely to benefit from economic growth owing to their cyclical nature
- Have relatively higher liquidity on the stock exchanges

25-35% of Portfolio



## Our philosophy while managing your money

- \* **Forensics** - Use forensics framework to check accounting quality, board governance standards and ownership background
- \* **Acceptable Price** - Focus on reasonably priced businesses with medium term earnings power rather than short term and be value/growth style agnostic
- \* **Investment Style Agnostic** - Emphasize investing in strong businesses capable of delivering long-term returns, while remaining agnostic to value or growth investing styles
- \* **Robustness** - Pick well managed businesses having scalable opportunities and superior return on capital employed



## Scheme details



### MINIMUM APPLICATION AMOUNT

Lump sum: Minimum of Rs. 100/- & multiples of Re. 1/- thereafter  
SIP: Rs. 100/- and in multiples of Re. 1 thereafter



### Investment Objective

The Fund seeks to generate long-term capital appreciation by investing in a diversified portfolio of equity & equity-related instruments across large cap, mid cap and small cap stocks. However, there is no assurance that the investment objective of the Scheme will be realized and the Scheme does not assure or guarantee any returns.



### EXIT LOAD

If the units are redeemed /switched out on or before 90 days from the date of allotment – 1% of the applicable NAV.  
If the units are redeemed /switched out after 90 days from the date of allotment - NIL



### BENCHMARK

NIFTY 500 Multicap 50:25:25 TRI



### FUND MANAGERS

Mr. Trideep Bhattacharya  
Mr. Sahil Shah (Co-Fund Manager)  
Mr. Amit Vora (Overseas Securities)



### INCEPTION DATE

26<sup>th</sup> October 2023



# Asset allocation

Instruments	Indicative Allocation (% of Total Assets)	Risk Profile
Equity & Equity related instruments out of which	75% to 100%	Very High
Large Cap Companies	25% to 50%	Very High
Mid cap companies	25% to 50%	Very High
Small cap companies	25% to 50%	Very High
Debt and money market instruments	0% to 25%	Low to Moderate
Units issued by REITs and InvITs	0% to 10%	Moderate to High

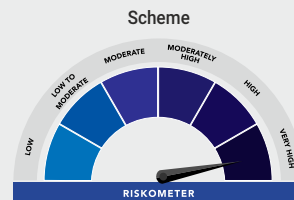
For detailed asset allocation, please refer the SID of the scheme available on the website.

To invest, visit [www.edelweissmf.com](http://www.edelweissmf.com) | Download 'eInvest' Mobile App

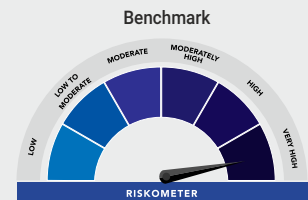
Edelweiss Multi Cap Fund is suitable for investors who are seeking\*:

- Long term capital appreciation
- Investment in equity and equity related instruments across large, mid and small cap stocks

\* Investors should consult their financial advisers if in doubt about whether the product is suitable for them



Investors understand that their principal will be at Very High risk



NIFTY 500 Multicap 50:25:25 TRI

This document is for information purposes and private circulation only and is not an offer to sell or a solicitation to buy any mutual fund units/ securities or to have business relations with Sponsor/ AMC/ Trustee Company and its associates or Edelweiss Mutual Fund. These views alone are not sufficient and should not be used for the development or implementation of an investment strategy. All opinions, figures and estimates included in this document (unless as specified in the document) are as of this date and are subject to change without notice. It should not be construed as investment advice to any party. Neither Sponsor/ AMC/ Trustee Company and its associates nor Edelweiss Mutual Fund or any person connected with it, accepts any liability arising from the use of this information. Utmost care has been exercised while preparing the document, and Sponsor/ AMC/ Trustee Company and its associates or Edelweiss Mutual Fund does not warrant the completeness or accuracy of the information and disclaims all liabilities, losses and damages arising out of the use of this information. The recipient of this material should rely on their investigations and take their own professional advice. Investment decisions of the AMC may not always be profitable. The above is the investment ideology which will be followed by the fund manager. However, this can change based on market dynamics, economic scenarios etc. For detailed investment strategy, risk factors of the schemes please refer to SID available on website. The representational logos used does not imply any affiliation or endorsement by the brands. These are for illustration purpose only.

Mutual Fund Investments are subject to market risks, read all scheme related documents carefully.